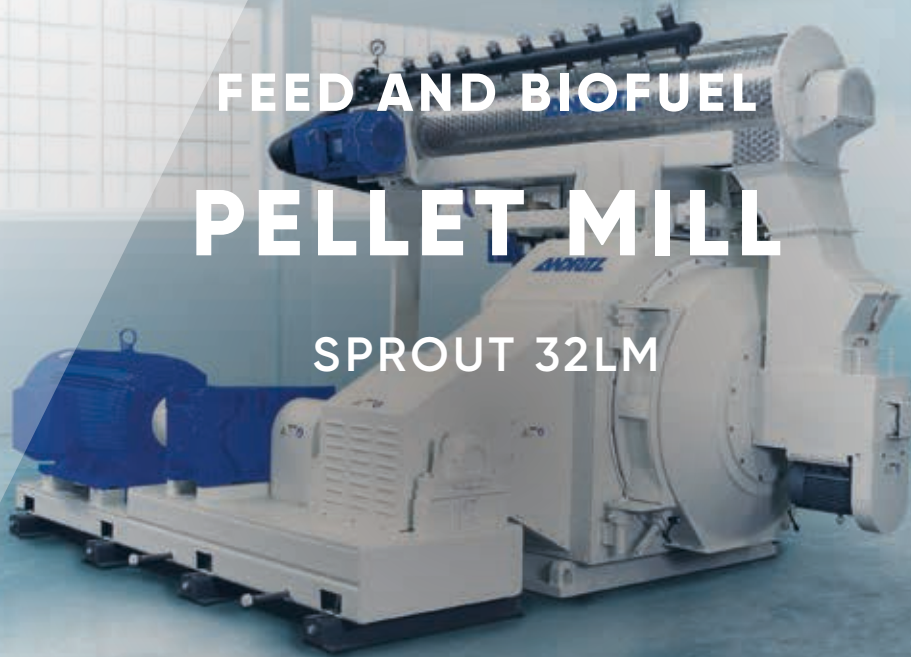




# FEED AND BIOFUEL PELLET MILL SPROUT 32LM



The ANDRITZ 32LM, with the most rugged design available is a 500 HP follow-up to the 26LM II with same quality and performance, just in a bigger scale.

#### STANDARD FEATURES

- Double reduction drive
- Up to 500HP

- Tapered diemount with self centering feature
- Major components are hardened stainless steel
- Shear key protection
- Keyed door interlock system
- 3 roll assemblies with state-of-the-art roll bearings
- Simple design (minimal parts)

- Stainless steel door

#### REPLACEABLE WEAR RINGS

The die housing and the die stiffener feature a replaceable, split wear ring which ensures major component longevity while reducing wear part costs. No special tools are required for replacement.



ENGINEERED SUCCESS

## BALANCED ROLL ASSEMBLY DESIGN

Three heavy duty roll shells with a narrow track width are supplied with sturdy, tapered roller bearings to minimize die stress. Independent roller adjustment is simple and effective for maintaining proper roll-to-die clearance.

## SAFETY PROTECTION

The shear key system protects the pellet mill against damage from foreign material entering the die cavity. A proximity switch interlocked with the motor starter will cut power to the mill when the shear keys break. A V-belt slip sensor is supplied as standard to prevent damage to the V-belts and drive.

## CENTRI-FEEDER FOR OPTIMUM FEEDING

ANDRITZ's exclusive Centri-Feeder® distributes material around 360 degrees of the die, maintaining die cavity balance and providing improved pellet quality. Balanced feedstock distribution results in greater mill capacity.

## OPTIONS

- Hoist with lifting tools to facilitate quick and easy die and roll changes
- Conditioner with optional water and/or steam addition
- Auto grease system for roll and main bearings
- Full-circle pellet breaker to control pellet length
- Right or left hand door and drive

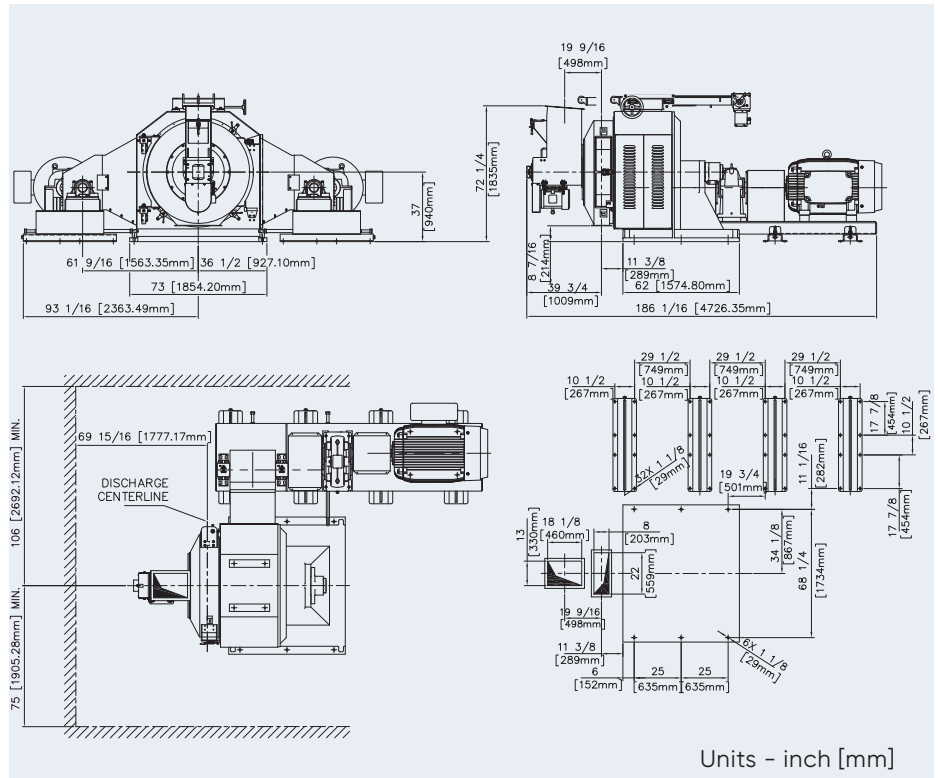
## ANDRITZ Feed and Biofuel A/S

andritz-fb.dk@andritz.com

p: +45 72 160 300 / andritz.com/ft

# ANDRITZ

All data, information, statements, photographs and graphic illustrations in this leaflet are without any obligation and raise no liabilities to or form part of any sales contracts of ANDRITZ AG or any affiliates for equipment and/or systems referred to herein. © ANDRITZ AG 2018. All rights reserved. No part of this copyrighted work may be reproduced, modified or distributed in any form or by any means, or stored in any database or retrieval system, without the prior written permission of ANDRITZ AG or its affiliates. Any such unauthorized use for any purpose is a violation of the relevant copyright laws. ANDRITZ AG, Statterger Strasse 18, 8045 Graz, Austria.



## TECHNICAL DATA

### Main motor

Up to 500 HP [373kW], 1,800 RPM

### Die

Inside diameter: 32 inches [813mm]  
 Effective die width: 4.5 inches [114mm]  
 Die area: 452 sq.inches [2916 cm<sup>2</sup>]  
 Available die speeds: 150 RPM  
 (others on request) 174 RPM

### Roll assemblies

Quantity: 3  
 Roll shell outside diameter: 12 inches [305mm]

### Component weights

Pellet mill: 15,200 lbs [6895 kg]  
 Centri-feeder®: 700 lbs [318 kg]  
 Hoist: 600 lbs [272 kg]  
 Jackshaft assembly (without motor): 6,200 lbs [2812 kg]

## ANDRITZ Feed and Biofuel USA

andritz-fb.us@andritz.com

p: +1 570 546 1253



1 0518